



# UNiQ

**CATALOG**

**FORT MCMURRAY MINOR HOCKEY ASSOCIATION**

## Gildan 18500

- 8 oz., 50% USA cotton, 50% polyester
- Pill-resistant air jet yarn
- Double-lined hood
- Double-needle stitching throughout
- Pouch pocket; matching draw cord
- Gildan 1x1 ribbed cuffs and waistband with spandex
- Made with 50% sustainably and fairly grown USA cotton
- Gildan's Community Investment Program supports education, the environment, humanitarian aid and active living in the communities we do business in
- Gildan's manufacturing process utilizes 45% renewable energy

BASE PRICE		
SIZE	LEFT CHEST	FULL FRONT
S - XL	\$30	\$35
2XL	\$32	\$39
3XL	\$34	\$40
4XL	\$36	\$40
Deduct \$2 from the base price for youth sizes.		

CUSTOMIZATIONS	
LOCATION	ADDITIONAL COST
Back	\$10
Left Arm	\$5
Right Arm	\$5
All Placements	\$18



LEFT CHEST PLACEMENT



FULL FRONT PLACEMENT



BACK PLACEMENTS

2 options: Top or Bottom



ARM PLACEMENTS

\*GRAPHICS WILL BE POSITIONED CENTRALLY ALONG THE OUTSIDE OF THE SLEEVE



**LEFT CHEST PLACEMENT**



**FULL FRONT PLACEMENT**



**BACK PLACEMENTS**

2 options: Top or Bottom



**ARM PLACEMENTS**

\*GRAPHICS WILL BE POSITIONED  
CENTRALLY ALONG THE OUTSIDE OF  
THE SLEEVE

## Gildan 18000

- 13.3 oz./lin.yd., 50% USA cotton, 50% polyester
- Pill-resistant air jet yarn
- Double-needle stitching throughout
- Set-in sleeves
- 1x1 ribbed collar, cuffs and waistband with spandex
- Gildan's Community Investment Program supports education, the environment, humanitarian aid and active living in the communities we do business in
- Gildan's manufacturing process utilizes 45% renewable energy

BASE PRICE		
SIZE	LEFT CHEST	FULL FRONT
S - XL	\$26	\$30
2XL	\$28	\$32
3XL	\$29.50	\$33.50
4XL	\$29.50	\$33.50
Deduct \$2 from the base price for youth sizes.		

CUSTOMIZATIONS	
LOCATION	ADDITIONAL COST
Back	\$10
Left Arm	\$5
Right Arm	\$5
All Placements	\$18



Gildan G640 (Soft Style)

- 7.5 oz./lin.yd., 100% preshrunk ringspun cotton jersey
- Seamless double-needle 3/4" collar
- Taped neck and shoulders
- Rolled forward shoulder
- Double-needle sleeve and bottom hem
- Tubular fit for minimal torque
- Tear away label
- Gildan's Community Investment Program supports education, the environment, humanitarian aid and active living in the communities we do business in
- Gildan's manufacturing process utilizes 45% renewable energy

BASE PRICE		
SIZE	LEFT CHEST	FULL FRONT
S - XL	\$18	\$20
2XL	\$21	\$23
3XL	\$23	\$25
4XL	\$23	\$25
Youth Sizing available for the same base price		

CUSTOMIZATIONS	
LOCATION	ADDITIONAL COST
Back	\$10



LEFT CHEST PLACEMENT



FULL FRONT PLACEMENT



BACK PLACEMENTS

2 options: Top or Bottom



### LEFT CHEST PLACEMENT



### BACK PLACEMENTS

2 options: Top or Bottom



### ARM PLACEMENTS

\*GRAPHICS WILL BE POSITIONED  
CENTRALLY ALONG THE OUTSIDE OF  
THE SLEEVE

## Gildan 18600

- 13.3 oz./lin.yd., 50% USA cotton, 50% polyester
- Pill-resistant air jet yarn
- Made with 50% sustainably and fairly grown USA cotton
- Pill-resistant air jet yarn
- Unlined hood
- Set-in sleeves
- Pouch pockets
- Hood with matching drawstring
- Metal zipper
- 1x1 ribbed cuffs and waistband with spandex
- Double-needle stitching throughout
- Gildan's manufacturing process utilizes 45% renewable energy
- Gildan's Community Investment Program supports education, the environment, humanitarian aid and active living in the communities we do business in

### BASE PRICE

SIZE	LEFT CHEST
S - XL	\$40
2XL	\$47
3XL	\$49.50
4XL	\$49.50

Youth Sizing available for the same base price

### CUSTOMIZATIONS

LOCATION	ADDITIONAL COST
Back	\$10
Left Arm	\$5
Right Arm	\$5
All Placements	\$18



## Bella + Canvas 3719 - Unisex

- 8 oz., 52% Airlume combed and ring-spun cotton, 48% polyester fleece
- White cord drawstring, unisex sizing, retail fit
- Pouch pockets
- Ribbed cuffs and waistband
- Tear away label



## Bella + Canvas 3739 - Unisex

- 13-oz, 50/50 cotton/polyester fleece
- Ring spun cotton
- Compacted yarns to minimize shrinkage
- Double lined hood with flat drawstring
- Anti-Pill



## Bella + Canvas 3727 - Unisex

- 8 oz., 52% combed and ring spun cotton, 48% polyester fleece
- Side pockets
- White cord drawstring
- Cuffed bottom
- Sideseamed
- Tear away label



## Bella + Canvas 4737 - 10 oz. Heavyweight

- 10 oz./yd, 60/40 Airlume combed and ring-spun cotton/polyester fleece
- Unisex silhouette
- Interior brushed fleece
- Easy pull-on waistband with encased elastic draw cord
- Interior waistband dyed to match draw cord for adjustability and custom fit
- Encased elastic leg cuff, scrunch ankle
- Side seam pockets
- Tear away label

BASE PRICE		
SIZE	LEFT CHEST	FULL FRONT
S - XL	\$52	\$55
2XL	\$57	\$60
3XL	\$51	\$64
Deduct \$1 from the base price for youth sizes.		

BASE PRICE	
SIZE	LEFT CHEST
S - XL	\$55
2XL	\$60
3XL	\$64
Deduct \$10 from the base price for youth sizes.	

BASE PRICE	
SIZE	LEFT LEG
S - XL	\$57
2XL	\$61
Youth Sizing not available	

CUSTOMIZATIONS	
LOCATION	ADDITIONAL COST
Back	\$10
Left Arm	\$5
Right Arm	\$5
All Placements	\$18

CUSTOMIZATIONS	
LOCATION	ADDITIONAL COST
Back	\$10
Left Arm	\$5
Right Arm	\$5
All Placements	\$18

CUSTOMIZATIONS	
LOCATION	ADDITIONAL COST
Right Leg	\$5

BASE PRICE	
SIZE	LEFT LEG
S - XL	\$85
2XL	\$90
3XL	\$95
4XL	\$100
Youth Sizing not available	

CUSTOMIZATIONS	
LOCATION	ADDITIONAL COST
Right Leg	\$5



## Bella + Canvas 4719 - 10 oz. Heavyweight

- 10 oz./yd, 60/40 Airlume combed and ring-spun cotton/ polyester fleece
- Relaxed fit, unisex silhouette
- Interior brushed fleece
- Single dart construction
- Double-layered hood (no draw cord)
- Rib detail cuffs & waistband
- Set sleeve slightly dropped
- Pouch pocket
- Side seams
- Tear away label

BASE PRICE		
SIZE	LEFT CHEST	FULL FRONT
S - XL	\$85	\$88
2XL	\$90	\$93
3XL	\$95	\$98
Youth Sizing not available		

CUSTOMIZATIONS	
LOCATION	ADDITIONAL COST
Back	\$10
Left Arm	\$5
Right Arm	\$5
All Placements	\$18



## Bella + Canvas 3001 - Unisex Jersey T Shirt

- 7 oz./lin. yd., 100% Airlume combed and ringspun cotton
- Retail fit
- Unisex youth sizing
- Sideseamed
- Tear away label
- Pre-shrunk

BASE PRICE		
SIZE	LEFT CHEST	FULL FRONT
S - XL	\$20.50	\$23
2XL	\$23	\$25.50
3XL	\$26	\$28.50
4XL	\$28	\$30.50

Youth Sizing available for the same base price

CUSTOMIZATIONS	
LOCATION	ADDITIONAL COST
Back	\$10
Left Arm	\$5
Right Arm	\$5
All Placements	\$18



## Bella + Canvas 3501 - Jersey Long Sleeve

- 7 oz./lin. yd., 100% Airlume combed and ringspun cotton polyester fleece
- Retail fit
- sideseamed
- Ribbed cuffs
- Tear away label

BASE PRICE		
SIZE	LEFT CHEST	FULL FRONT
S - XL	\$25	\$28
2XL	\$29	\$32
3XL	\$35	\$38
Youth Sizing available for the same base price		

CUSTOMIZATIONS	
LOCATION	ADDITIONAL COST
Back	\$10
Left Arm	\$5
Right Arm	\$5
All Placements	\$18



### ATC Everyday ATCF2500

- Fleece Hooded Sweatshirt Features:
- 13-oz, 50/50 cotton/polyester fleece
- Compacted yarns to minimize shrinkage
- Double lined hood with drawstring

BASE PRICE		
SIZE	LEFT CHEST	FULL FRONT
S - XL	\$30	\$35
2XL - 4XL	\$32	\$39
Youth Sizing available for the same base price		

CUSTOMIZATIONS	
LOCATION	ADDITIONAL COST
Back	\$10
Left Arm	\$5
Right Arm	\$5
All Placements	\$18



### ATC Everyday ATCF2550

#### Fleece Two-Tone

- 13-oz, 50/50 cotton/polyester fleece
- Ring spun cotton
- Compacted yarns to minimize shrinkage
- Double lined hood with flat drawstring
- Anti-Pill

BASE PRICE		
SIZE	LEFT CHEST	FULL FRONT
S - XL	\$40	\$42
2XL - 4XL	\$42	\$44
Youth Sizing available for the same base price		

CUSTOMIZATIONS	
LOCATION	ADDITIONAL COST
Back	\$10
Left Arm	\$5
Right Arm	\$5
All Placements	\$18



### ATC Everyday ATCF2400

- 13-oz, 50/50 cotton/polyester fleece
- Compacted yarns to minimize shrinkage

BASE PRICE		
SIZE	LEFT CHEST	FULL FRONT
S - XL	\$29	\$31
2XL - 4XL	\$31	\$33
No youth sizing available		

CUSTOMIZATIONS	
LOCATION	ADDITIONAL COST
Back	\$10
Left Arm	\$5
Right Arm	\$5
All Placements	\$18





**ATC Everyday ATCF2600**  
**Fleece Full Zip**

- 13-oz, 50/50 cotton/polyester fleece
- Compacted yarns to minimize shrinkage
- Double lined hood with drawstring

BASE PRICE	
SIZE	LEFT CHEST
S - XL	\$39
2XL - 4XL	\$42
Deduct \$3 from the base price for youth sizes.	

CUSTOMIZATIONS	
LOCATION	ADDITIONAL COST
Back	\$10
Left Arm	\$5
Right Arm	\$5
All Placements	\$18

**ATC Everyday ATCF2800**  
**Fleece Sweatpants**

- 13-oz, 50/50 cotton/polyester fleece
- Compacted yarns to minimize shrinkage
- Elastic cuffs
- Front pockets
- Elastic waistband with drawstring

BASE PRICE	
SIZE	LEFT LEG
S - XL	\$40
2XL - 4XL	\$43
Youth Sizing available for the same base price	

CUSTOMIZATIONS	
LOCATION	ADDITIONAL COST
Right Leg	\$5

**ATC S355 Pro Team Short**

- 6.3-oz, 100% performance polyester jersey with wicking technology
- Elastic waistband with drawstring
- 9" Inseam
- Moisture wicking
- Breathable

BASE PRICE	
SIZE	LEFT LEG
S - XL	\$26
2XL	\$28
3XL	\$30.50
4XL	\$33.50
Youth Sizing available for the same base price	

CUSTOMIZATIONS	
LOCATION	ADDITIONAL COST
Right Leg	\$5



### K011800 - Matte Hip Pack

- 100% 2-layer soft, smooth matte polyester
- Contrast lining designed to enhance interior visibility
- Main zippered compartment
- Dyed-to-match easy-glide moulded zipper with metal pull
- Interior pocket with hook and loop closure
- Adjustable waist strap with buckle for a custom fit
- Versatile for crossbody wear

LOGO LEFT BOTTOM CORNER **\$20**  
**CUSTOMIZATION:** NUMBER + **\$5**



### K011800 - Matte Hip Pack

- 100% 2-layer soft, smooth matte polyester
- Contrast lining designed to enhance interior visibility
- Main zippered compartment
- Dyed-to-match easy-glide moulded zipper with metal pull
- Back zippered security pocket
- Adjustable waist strap with buckle for a custom fit
- Versatile for crossbody wear

LOGO LEFT BOTTOM CORNER **\$20**  
**CUSTOMIZATION:** NUMBER + **\$5**



### K011802 - Matte Sling Bag

- 100% 2-layer soft, smooth matte polyester
- Contrast lining designed to enhance interior visibility
- Main zippered compartment
- Dyed-to-match easy-glide moulded zipper with metal pull
- Front zippered pocket
- Interior pocket with hook and loop closure
- Adjustable ambidextrous shoulder strap
- Web carry handle

LOGO LEFT BOTTOM CORNER **\$25**  
**CUSTOMIZATION:** NUMBER + **\$5**



### K011803 - Matte Backpack

- 100% 100% 2-layer soft, smooth matte polyester
- Contrast lining designed to enhance interior visibility
- Main zippered compartment
- Interior sleeve pocket with hook and loop closure
- Padded back panel with zippered compartment
- Front zippered pleated pocket
- Dyed-to-match easy-glide moulded zipper with metal pull
- Adjustable, padded shoulder straps
- Two side pockets
- Web carry handle
- Luggage trolley strap

LOGO MIDDLE TOP **\$40**  
**CUSTOMIZATION**  
LEFT CORNER + **\$5**  
RIGHT CORNER + **\$5**



## Yupoong 6006 Adult 5-Panel Classic Trucker Cap

- Embroidered logo
- Fabric: 65% polyester, 35% cotton
- 5-panel, structured, high-profile
- Eight-row stitching on flat visor
- 4" crown
- Hard buckram backed front panels
- Matching undervisor
- Plastic adjustable closure

\$25



## Sportsman Cuffed Beanies

- Embroidered logo
- 100% acrylic
- Heather Grey is 62/38 acrylic/ polyester
- Heather Charcoal is 80/20 polyester/ acrylic
- Other Heather colours are 50/50 acrylic/ polyester
- 12" knit
- Adjustable cuff, shown as 3"

\$23



## Sportsman Pom Pom Beanies

- Embroidered logo
- 100% acrylic
- Heather Grey is 62/38 acrylic/ polyester
- Heather Charcoal is 80/20 polyester/ acrylic
- Other Heather colours are 50/50 acrylic/ polyester
- 12" knit
- 4 top-seams
- 3" cuff
- Pom-pom on top

\$25



## 20oz Stainless Steel Tumbler - Includes Lid & Straw

- Premium Quality: Made from 304 18/8 food-grade stainless steel - no metallic taste
- Temperature Control: Double-walled insulation keeps drinks hot for 3 hours, cold for 9
- Leak-Proof Lid: BPA-free plastic lid prevents spills and splashes
- Reusable Straw: Each tumbler includes a durable, eco-friendly plastic straw
- Powder-Coated Finish: Sweat-proof grip with bold colour options that pop
- On-the-Go Ready: Fits most car cup holders (6.6" tall, 3.4" lid diameter)
- Care Tip: Hand wash recommended to preserve finish

\$25



## 4" Sticker

- Matte or Glossy
- Printed with eco-solvent inks for vibrant, long-lasting colour
- Durable, water-resistant, and scratch-resistant
- Great for laptops, lockers, cars, tumblers & more
- Indoor and light outdoor use (not for prolonged sun exposure)
- Custom sizes available - precision cut to fit your needs
- Strong adhesive, clean removal from most surfaces

\$3

## COMMUNICATION & RESPONSE TIMES

We aim to respond to all team manager inquiries within 1-2 business days, with most messages answered within just a few hours during peak ordering periods. Urgent issues will always take priority, and we're available to troubleshoot quickly if anything unexpected comes up.

Email is our preferred method of communication to keep everything organized and trackable, but we are also available by phone when a quick call is the easiest way to move things forward. Whatever the situation, we're committed to being responsive, reliable, and easy to reach.

## PRODUCTION & TURNAROUND TIMES

Once a deposit is received (see payment terms), final goods will be delivered within 5-10 business days. Our standard turnaround for most team orders is 10-15 business days from the point of design approval and payment. Managers will receive a clear estimated delivery date up front, and if there are any delays—such as issues obtaining blank apparel—we'll notify the team manager immediately to decide on next steps, like alternative styles, colours, or adjusted timelines.

We also understand that last-minute needs happen, and while we can't guarantee rush jobs, we've been known to pull off a miracle or two.

## ERRORS & QUALITY ASSURANCE

We stand behind the quality of everything we produce. If something's not right—whether it's a misprint, incorrect size, or a customization error—we'll address it promptly and professionally, with a clear plan to correct the issue. Our reputation rides on delivering what we promise, and we take that seriously.

## SIZING GUIDES

To ensure a smooth ordering experience, sizing kits can be accommodated and dropped off to team managers prior to placing team orders. This gives players a chance to try on sample sizes and reduces guesswork when it comes to fit.

## PAYMENT TERMS & INVOICING

To keep the ordering process smooth, predictable, and well-documented, UNiQ Edge follows a clear and flexible payment structure:

### Team Manager Orders

#### Online Ordering

To streamline the process, each approved team manager will receive a unique coupon code for online ordering. This code will allow them to submit orders through our website without immediate payment at checkout.

Once an order is placed using the code:

- A zero-dollar order confirmation will be generated.
- UNiQ Edge will issue an official invoice via Quick Books reflecting the full order amount.

#### PDF Order Forms

If a team prefers to submit a fillable PDF order form:

- Once received via email, UNiQ Edge will generate a Quick Books invoice based on the submitted order.

## PAYMENT SCHEDULE

**For orders over \$1,000:** A 50% deposit is required prior to production. The remaining balance is due within 30 days of delivery (Net 30).

- 4% monthly interest will be applied to any overdue amounts.

**For orders under \$1,000:** Full payment is due within 30 days of delivery.

## INVOICING PROCESS

Invoices will be sent digitally through Quick books, and can be paid via e-transfer, credit card, or other arranged methods.

All orders are tracked internally, and payment reminders will be sent as needed.

For any association-wide purchases (e.g. volunteer apparel, sponsor swag), invoices can be issued directly to FMMHA with payment terms agreed upon in advance.

## INDIVIDUAL ORDERS

Individual orders will be available online through our website: [uniqedge.ca/fmmha](http://uniqedge.ca/fmmha)



# HOW OUR APPAREL IS MADE

At UNIQ Edge, we prioritize quality, durability, and a clean, professional finish on every piece of apparel we produce. To achieve this, we use two main methods of decoration: Direct-to-Garment (DTG) and Direct-to-Film (DTF) printing. The method we choose depends on the fabric type and the intended use of the item, ensuring the best possible result for every garment.

## DTG — DIRECT-TO-GARMENT PRINTING

We use DTG printing primarily for cotton and cotton-blend garments (like hoodies, t-shirts, and long sleeves).

**What it is:** DTG is a high-resolution printing method that works much like an inkjet printer—but for clothing. It sprays water-based inks directly into the fabric and allows for detailed, full-colour designs with a soft, breathable feel.

**Why we use it:** DTG is ideal for small-batch or custom orders, including personalization (names/numbers) and team logos. It holds up well on cotton and blends like 65/35 cotton/poly, making it perfect for most team hoodies and t-shirts.

**Result:** Vibrant colours, no heavy vinyl feel, and excellent wash durability when cared for properly.

## DTF — DIRECT-TO-FILM PRINTING

For polyester and high-stretch performance fabrics (like jerseys, dry-fit shirts, and track jackets), we use DTF.

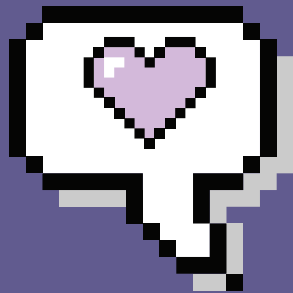
**What it is:** DTF involves printing a design onto a transfer film, which is then heat-pressed onto the garment. Unlike traditional vinyl, DTF prints allow for fine detail, full colour, and stretch-friendly performance.

**Why we use it:** Polyester doesn't absorb DTG inks well, but DTF adheres beautifully to synthetic fabrics and maintains flexibility—perfect for activewear and sports gear. It also holds up to repeat washes and movement, which is essential for jerseys and warm-up apparel.

**Result:** Clean edges, full-colour detail, and a durable finish that flexes with the fabric.

By using both DTG and DTF strategically based on fabric type, we ensure that every item—whether it's a soft cotton hoodie or a moisture-wicking team jersey—not only looks great, but also performs well all season long. This hybrid approach lets us produce high-quality gear that players, coaches, and parents will actually want to wear.





UNiQ

[WWW.UNIQEDGE.CA](http://WWW.UNIQEDGE.CA)